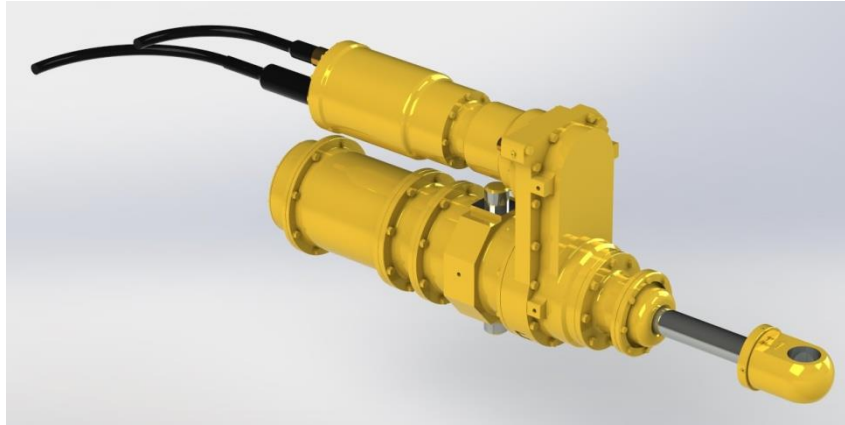


Update : 08/25/2017



*Immersed heavy duty linear actuator*

## 1 - Application

This actuator is adapted to application for off-shore platforms, trap-doors on ship, locks on boat.

The market targeted is naval.

## 2 - Description

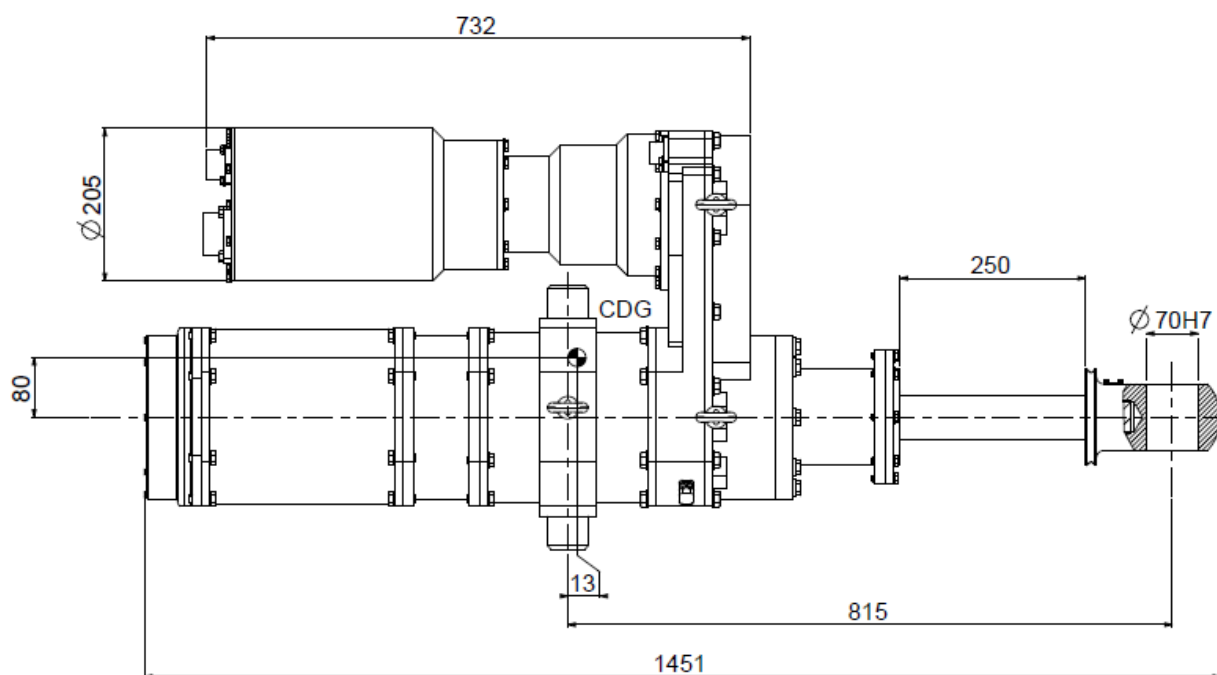
- Frameless DC motor
- Roll screw
- Push-pull actuator
- Electrical connector MIL-D38999
- Protected with paint and coating for harsh environment
- Resist to 50 bar pressure
- Certified to MIL-STD-810

**All our products can be customized to match your exact requirements**

### 3 - Technical Data

CHARACTERISTIC	SPECIFICATIONS
Travel	200 mm
Max velocity	30 mm/s
Force	200 kN
Size	1500 x 600 x 300 mm <sup>***</sup>
Weight	350 kg
Material	Stainless steel with high characteristics
Electrical specification	BLDC 400V 50Hz Three-Phase
Electronic	TOR
Immersion protection	Down to 500m depth, IP69

### 4 - Dimensions (mm) for 250mm-travel actuator



**Note** Other information's or drawings on demand

**ISP SYSTEM**  
 Z.I. de la Herry – B.P. 10047  
 65501 VIC-EN-BIGORRE - France

+33 (0)5 62 33 44 44

contact@isp-system.fr

+33 (0)5 62 33 44 45

www.isp-system.fr

Capital de 1 000 000 € - SIRET : 410 675 078 00027 – APE : 7112B – TVA : FR 19 410 675 078